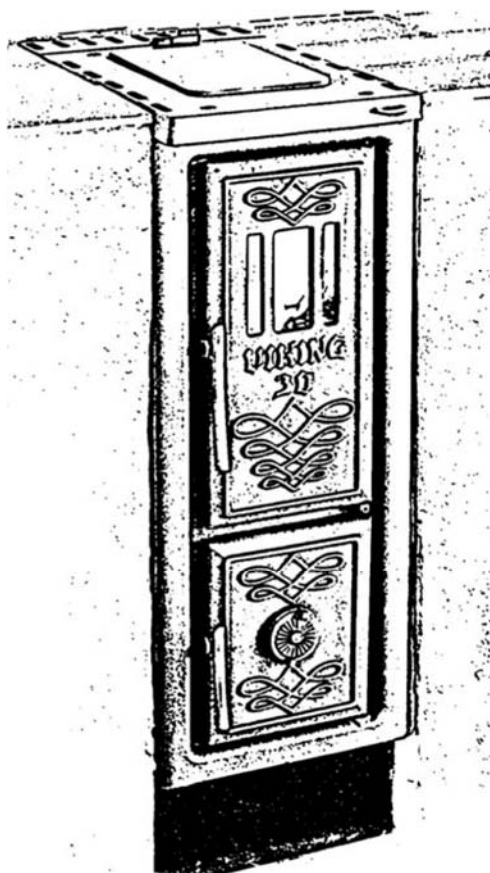

Viking 30

- Installations- and maintenance instructions



EN 12815
§15a
DIN+

www.j-davidssons.se



FOUNDED IN 1882

JOSEF DAVIDSSONS EFTR.

WOOD-BURNING COOKERS, STOVES & ACCESSORIES

info@j-davidssons.se

VIKING 30 – THE SLENDER STOVE

Dear Viking-customer,

Congratulations on your excellent choice of Viking 30, Sweden's most sold wood-burning cooker. Your new Viking 30 with its timeless design is an efficient source of heat with more and 100 years of experience and history to rely upon. It is equipped with the latest techniques of combustion to provide a maximum of heating capacity and a minimum of environmental impact.

We rest assured that you will enjoy many warm and good days with your Viking 30.

Please study these instructions carefully before starting the installation and before lighting a fire for the first time.

Table of contents

General information	3
Instructions for use & Lighting instructions	4-5
Technical data	6
Installation distances	7
Convection, Air of combustion & Fresh air connection	8
Exploded diagram/List of Spare Parts No 1	9
Exploded diagram/List of Spare Parts No 2	10
Assembly instructions for replacement of Vermiculite bricks and the rear iron	11
Environment approval certificate, No 0386/04	12
Trouble shooting for solving combustion problems	13
Guarantee certificate	14
Contact us	15



In order to make the most out of your stove, please see to it that it is:

1. Properly installed
2. Properly fired
3. Properly maintained

Preparations

Manufacturer's declaration

This product has been manufactured in accordance with the documents that constitute the basis for product certification wherein the installation- and maintenance instructions are integrated.

General information

VIKING 30 is manufactured of sturdy cast iron. The fireplace is covered with vermiculite bricks. There is an air gap left between the vermiculite cover and the sturdy cast iron side walls. The oval holes in the vermiculite bricks ensure good ventilation and prevent the side walls from being overheated. Thanks to the heat storing materials, the heat retention lasts for hours after the fire has gone out. The fireplace door is provided with a window made of hardened ceramic glass, through which you have a good view of the fire. The tight doors and the supply of specific air to the fireplace provide for a maximum of heating effect and a minimum of wood consumption. Secondary air is being added to the fire through the holes in the vermiculite side walls. By keeping the fireplace door slightly open during the lighting process, primary air is being added to the fire. Viking 30 is equipped a removable cooking plate, and with a fresh air inlet, handled with a screw at the front below the bottom door. It may be necessary for you to apply for building permission from your local planning authority before installing a stove or erecting a chimney. Check with your planning authority which regulations apply.

Before the stove is used, it must be inspected by an authorized chimney sweep or relevant authority to verify that the installation is proper made according to the installation instructions and that the connection to the chimney is tight.

This inspection must be carried out before using the stove disrespectful of if it refers to a connection to an existing or to a new chimney. Please read the installation instructions thoroughly before starting the installation work.

Chimney

The diameter of the chimney flue must be minimum 125mm, and have a recommended shortest length of minimum 3,5m, measured from the connection point at the stove. The stove designed for rear connection comes with a flue connection tube to be connected to the brick-lined chimney using mortar. Apply the enclosed stove cement inside the flue connection and also inside the stainless adaptor tube. Then press the adaptor tube on to the connection tube of the stove. The stove is now ready to be connected to the brick-lined chimney.

Distance to the wall

Please see the enclosed drawing on page 6.

Structural support

Normally, a kitchen stove and a (light-weight) chimney can be located on standard wooden floor joists in a single-family house. Viking 30 is approved to be installed without a floor plate underneath the stove itself, as the base plate of Viking 30 forms a part of the floor plate. The floor plate in front of the stove must fit tight to the base/bottom part of the stove and must cover a minimum of 30 cm in front of the doors and a minimum of 10 cm of each side. Floor plates are available as accessories.

Air of combustion

The air consumed for the combustion, approximately 10-20m³ per hour, is considered to be negligible. In houses with mechanical ventilation and in good isolated houses, however, it is recommended to place the stove close to a valve placed in an external wall. The combustion air can also be supplied from outside by connecting fresh air supply on the rear side of the stove.

Please study these instructions carefully before starting to use your stove and remember that the installation has to be approved by the chimney sweep before you are allowed to use the stove.

Instructions for use and Lighting instructions

When lighting the fire in your new Viking 30 for the first couple of times, it is recommended to heat cautiously. The heat-resisting paint will be more durable (it may produce a distinctive smell at the beginning).

NBI The stove must not be used as a combustion furnace. Other kind of fuel than what is recommended must not be used!

Fuel

The best heating value is achieved from chopped birch wood (generally from hardwood) that burns smoother than softwood. If you burn oak- or beech wood or another kind of wood with a high heating value you have to mix in some other kind of wood or you will risk to harm your fireplace. Peat pellets are also suitable.

The wood must be dry, with a moisture content of about 15-20%, and have the right size with a length of about 340 – 360mm and a diameter of 50 – 80mm. For a normal fire-burning a quantity of about 2 kg/wood an hour would be appropriate. The stoking amount should not exceed 1,9kg.

Lighting

If the chimney is cold and the draught is poor, you can try lighting some newspapers/fire starting cubes on top of the rear iron(number 15 on the exploded diagram, page 9) inside the fireplace.

Also, if the stove is new or not used for a time the, flue gas half(number 17 on the exploded diagram, page 10) can be removed for a short period of time(Removing the flue gas half is only possible when the stove designed for rear connection).

NBI Using the stove without the flue gas half will increase the flue gas temperature sturdily

How to start a fire:

Stoke No.1:

1. Place 3-4 pieces of smaller wood logs at the bottom of the fireplace. Put some newspapers or preferably fire starting cubes (do not soot) on the top of the logs. Then place another 6-7 logs on top but see to it that the maximum quantity does not exceed 2.0 kg.
2. Keep the fireplace door slightly open and set the screw beneath the bottom door in vertical position (open).
3. After about 5-6 minutes, close the primary air supply (the fireplace door) and let it lean just 2 mm.
4. Set the screw beneath the bottom door (secondary air supply) in the proper position to let the fire burn with a yellowish flame.

Stoke No.2:

5. Use the poker to distribute the glowing embers over the grates.
6. Stoke with 2 logs weighing about 1.9 kg
7. Keep the fireplace door slightly open to let the logs catch the fire and then close the door.
8. Set the screw beneath the bottom door in its vertical position (open).
9. After about 5-6 minutes reduce the opening of the primary air supply (the sliding air valve in the ash-pan) to about 1 mm and then after about further 2 minutes totally choke the primary air supply.
10. Set the screw beneath the bottom door (secondary air) in the proper position to let the fire burn with a yellowish flame.

Stoking the fire

Open the fireplace door slowly to avoid smoke to come out in the room. Then repeat the steps 5-10 from chapter "Lighting".

NBI Never stoke with logs as long as there is a good fire in the wood stove.

VIKING 30 – THE SLENDER STOVE

Maintenance instructions

At the cleaning procedure, special attention must be paid to the underside of the cooking plate. Shake and clean the grates from ashes regularly. Clean the top and the front of the stove by using a brass brush or a Scotsbrite sponge. It is to be carried out when the stove is cold. Then apply the enclosed stove blacking by using a sponge. After the blacking has dried, the stove can be polished to have a bright finish.

NBI Should salted water boil over, this could cause corrosion which can make the top of the stove rusty and porous. In this case the guarantee is void.

Good to know

- When you light a fire for the first time, a distinctive smell may be produced. This smell comes from oily coatings and from the paint. This smell will disappear once the wood stove has been used for a couple of times.
- Check at regular intervals the sealing strips at the doors. Replace when necessary.
- Keep the fireplace, all air intakes and flue pipes clean. If you frequently light a fire, it may be appropriate to have the chimney swept also in between the regular visits of the chimney sweep.
- After having fired the stove for some time there might be a deposit of soot on the glass door. Your dealer has the proper agents to remove it.
- If deposits of soot catch fire or if there is a risk that they will do so, close the combustion air intake and the doors. If necessary, contact the fire brigade to put out the fire. After a soot or chimney fire, the chimney should **always** be inspected by a chimney sweep.

VIKING 30 – THE SLENDER STOVE

Technical data

Triple values	8,3g/sek , 277°C , 10-12 Pa		
Weight	Kg	150	
Size	Height mm	850-900	
	Width mm	300	
	Depth mm	600	
	Stove hob	Width mm	300
Fireplace dimensions	Height mm	300	
	Width mm	190	
	Depth mm	390	
Fireplace opening	Height	175	
	Width mm	150	
Flue connection options	Rear & top		
See enclosed dimension sketches			

Structure

Combustion chamber	Cast iron/Vermiculite	
Sheet metal cover	DC01 2 mm	SS 1 142-32
Colour	Thermal black	
Glass	Hardened ceramic glass, Withstands 700°	

*Approved to be connected to a chimney with
½ stones thickness (350°).*

Option

Black Door handles

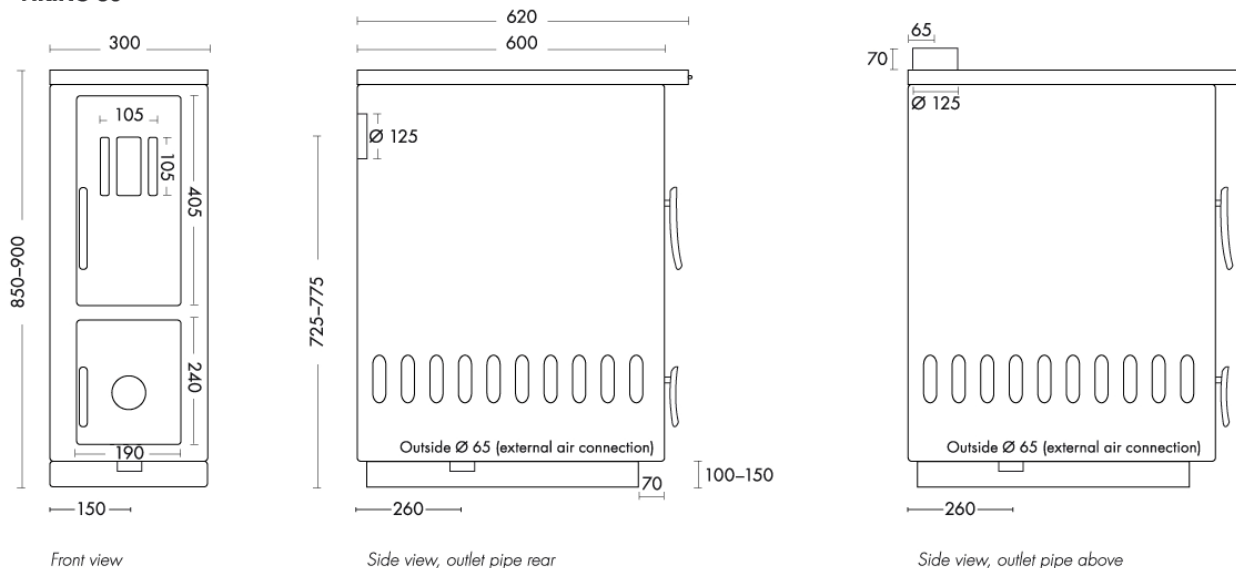
Floor plate, Black enamelled

Dimensions in mm D:400, B500

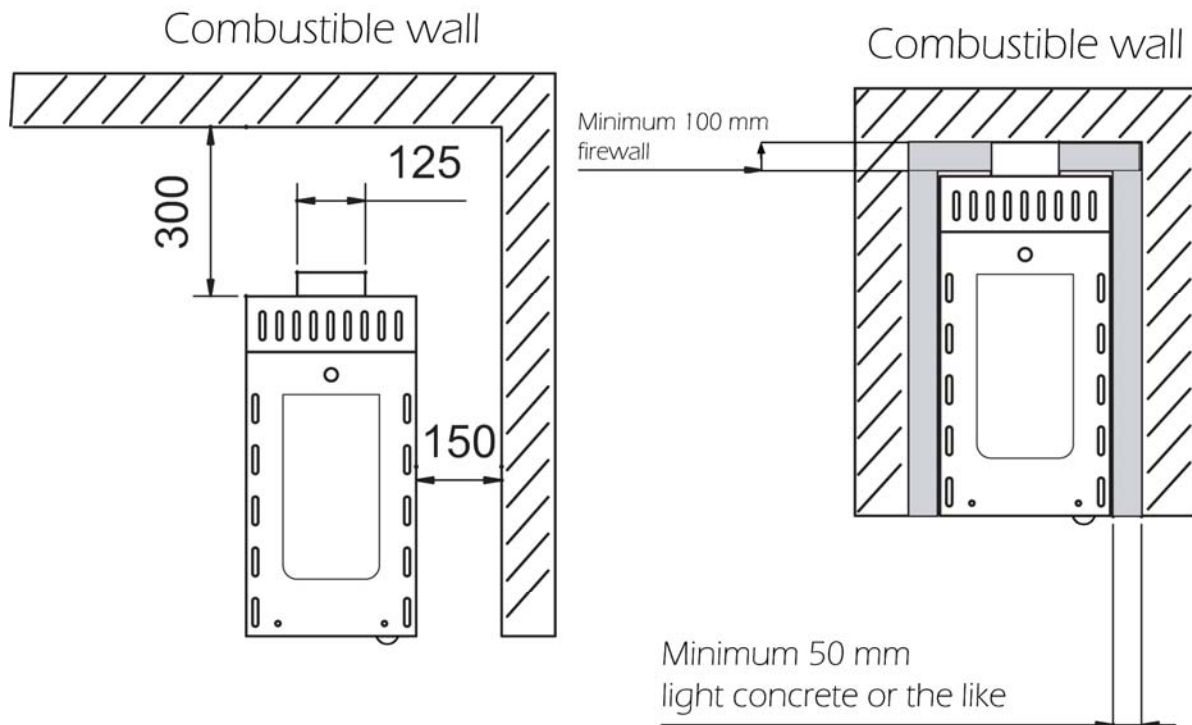
Damper, Stainless, mechanical, bypasses the long flue gases and speeds up the draught in the chimney/fireplace (only for rear connected Viking 30, retrofitable)

Detailed dimension print (mm)

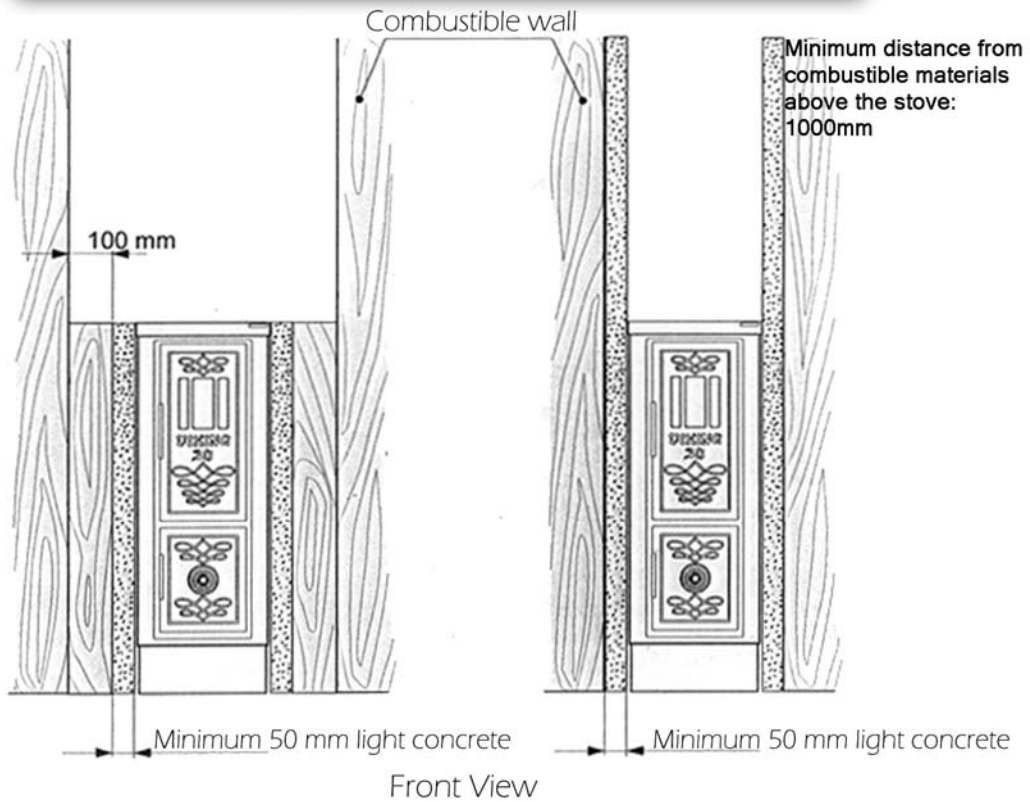
VIKING 30



VIKING 30 – THE SLENDER STOVE



NB!
There must be an air gap of
minimum 5 to 10 mm
between the sides of the stove and the firewalls.



VIKING 30 – THE SLENDER STOVE

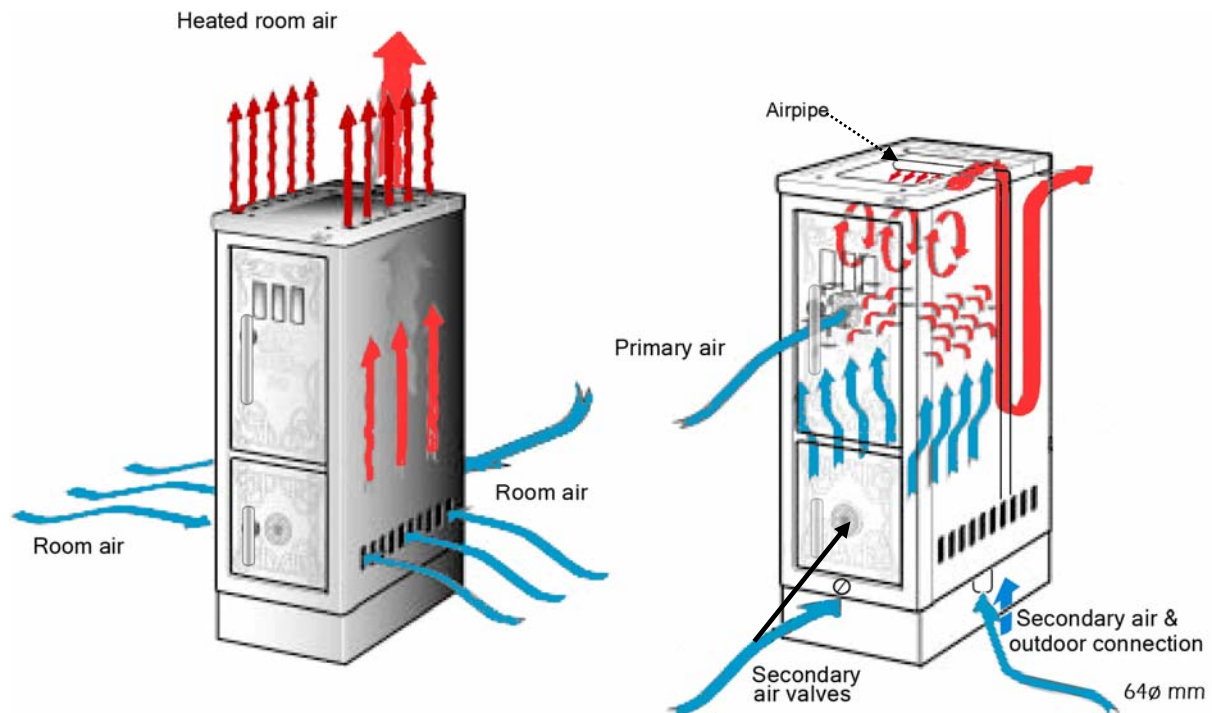
This is how your Viking 30 works.

Convection air

In addition to the heat radiation, the Viking 30 is equipped with convection heating technique. This means that the fresh ambient air is being sucked in through the sides of the stove, gets efficiently heated, and then pressed out through the oval holes on the stove hob. The result is that heated air flows out in the room, the sides of the stove become less heated and the stove heats a larger area.

Air of combustion & Fresh air

Primary air is being supplied by keeping the fireplace door slightly open during the lighting and stoking processes. Secondary air is being supplied through the swivel air valve of the bottom door and through the fresh air inlet placed underneath Viking 30. The secondary air is being heated in the stove and then finds its way to the fire through the holes in the vermiculite bricks in the fireplace.

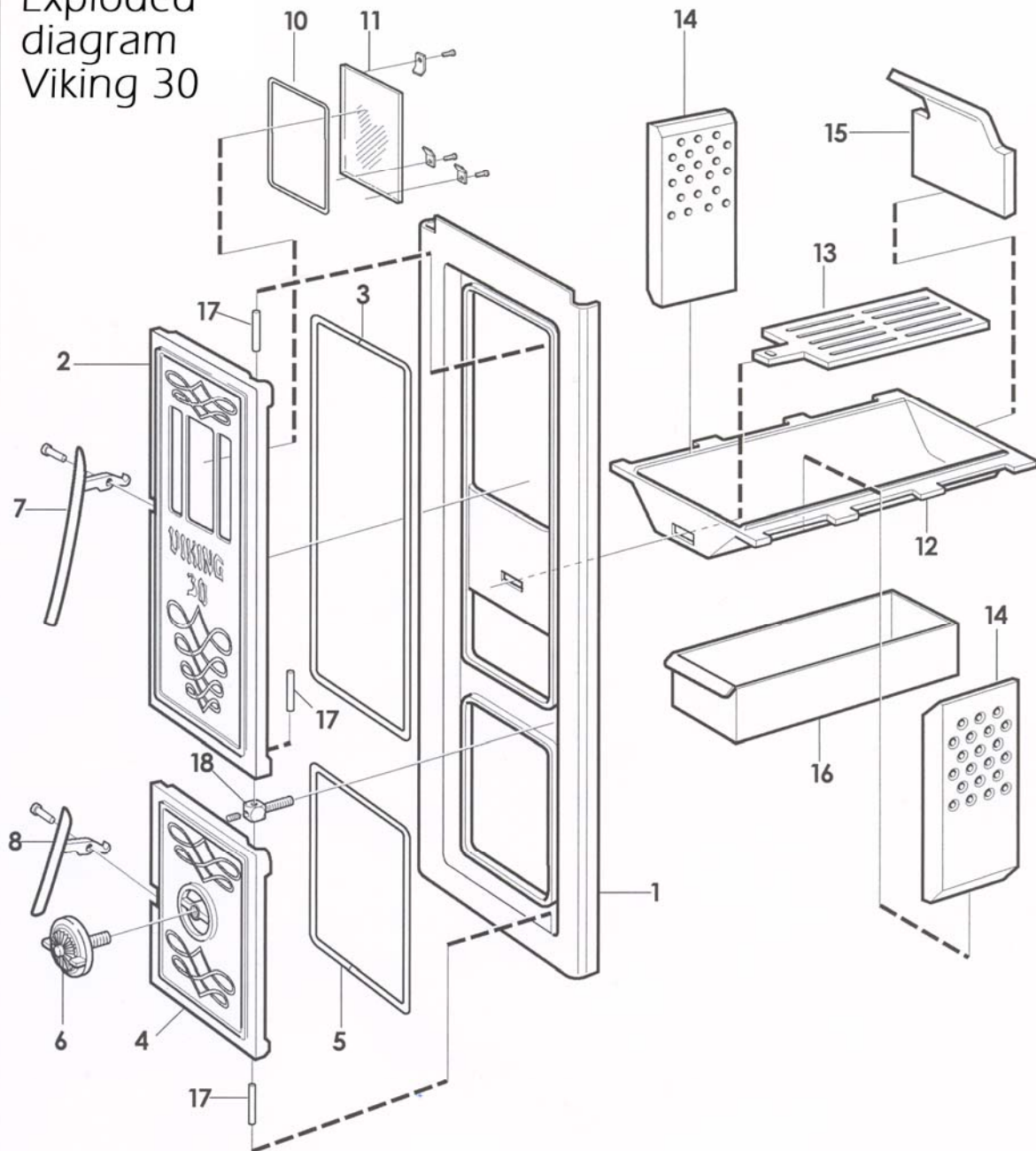


Use the tool that sits on top of the enclosed stove hook for regulating the secondary air valve.

VIKING 30 – THE SLENDER STOVE

List of Spare Parts No 1

Exploded diagram Viking 30

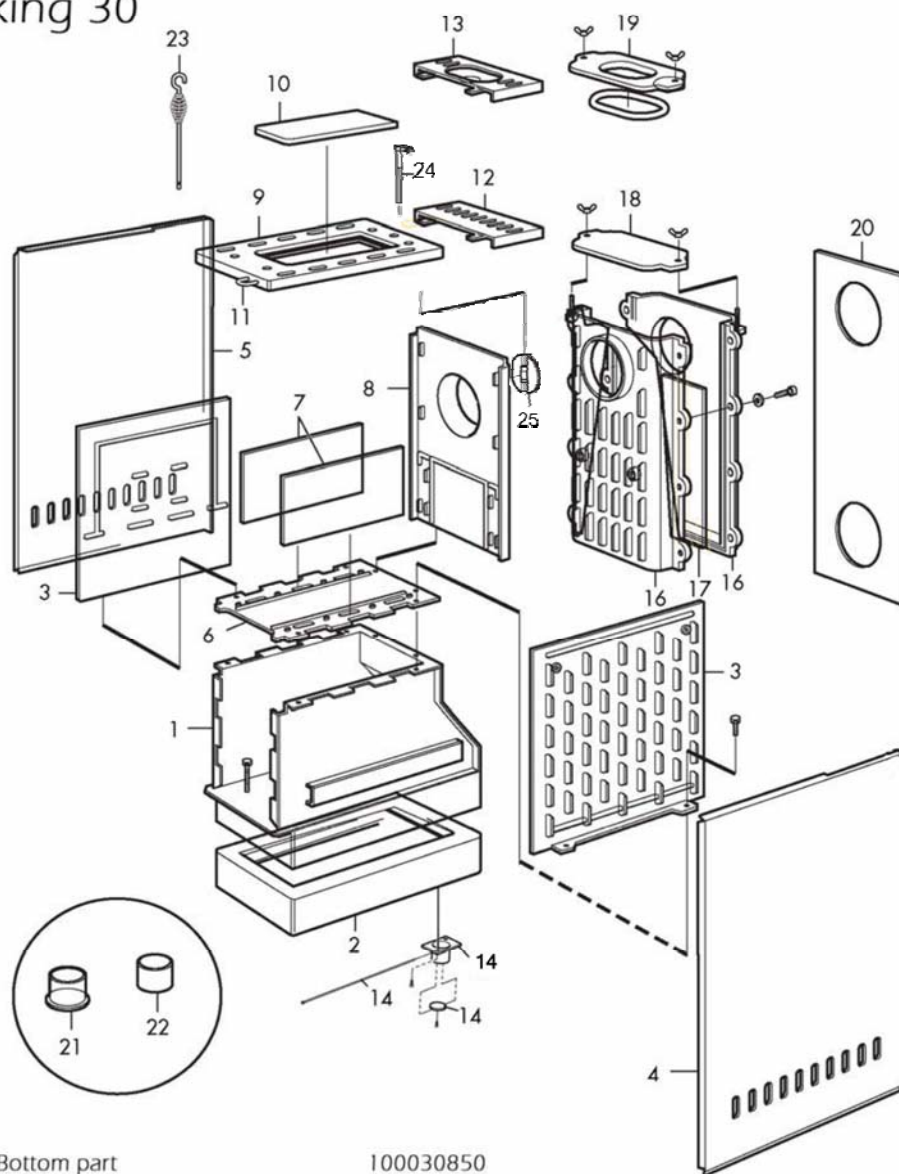


1. Front	100030320	10. Seal frame Ø 6 mm	990000430
2. Fireplace door	100030324	11. Glass	100031259
3. Gasket kit, fireplace door	100030201	12. Grate frame	100030302
4. Bottom door	100030327	13. Grate	100030303
5. Gasket kit, bottom door	100030202	14. Bricks of vermiculite, 6 pcs.	990000724
6. Swivel air valve	100030251	15. Rear iron	100030301
7. Door handle, fireplace door	100031250	16. Ash-pan	100030305
8. Door handle, bottom door	100031250	17. Pins, 3 pieces	100030247
		18. Hinge bolt	100030248

VIKING 30 – THE SLENDER STOVE

List of Spare Parts No 2

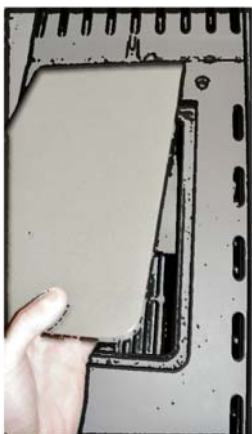
Exploded diagram Viking 30



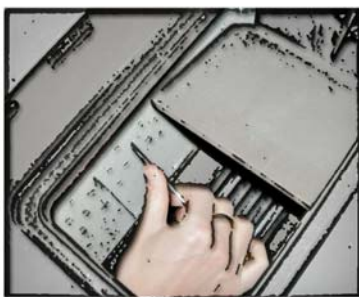
1. Bottom part	100030850		
2. Bottom part base	100030851		
3. Sides, 2 pieces	100030315		
4. Sheet metal cover, right	100030853		
5. Sheet metal cover, left	100030852		
6. Bottom plate	100030314		
7. Ash-pan side walls	100030309		
8. Back piece	100030606		
9. Top part	100030601		
10. Rectangular cooking plate	100030205		
11. Hob loop	100030249		
12. Rear top (rear connection)	100030602		
13. Rear top (top connection)	100030603		
		14. Air valve/control,	100030855
		14. Air valve connection tube	100030855
		16. "Turbo half" 2 pieces	100030257
		17. Flue gas half	100030253
		18. Flue gas cover (rear conn.)	100030255
		19. Flue gas cover (top conn.)	100030256
		20. Rear sheet metal cover	100030854
		21. Connection tube (tube-lining)	990000617
		22. Connection tube	990000618
		23. Poker	990000810
		24. Damper Control	100030252
		25. Damper 95mm diam	990000329

Assembly instructions:

change of vermiculite bricks and rear iron.



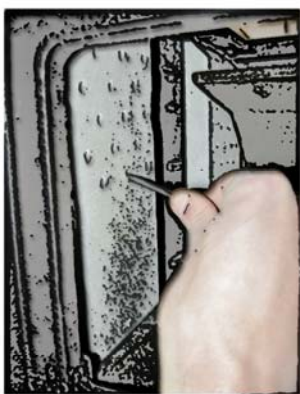
1. Remove the cooking plate.



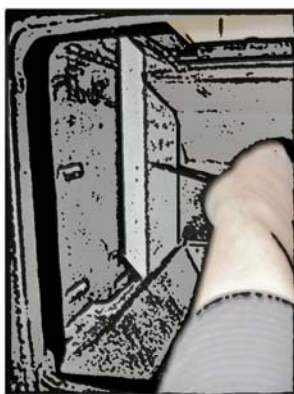
2. Open the fireplace cover and insert a narrow tool, e.g. a screw-driver, in one of the holes in the centre stone (always start with the centre stone).



3. Lift the stone upwards about 5 to 7 mm by means of the screwdriver. Then let the stone somewhat down and twist the lower part inwards towards the fireplace and then let it down entirely.



4. Then continue with the front stone and repeat step 3.



5. Pull the rear stone towards the centre and repeat step 3. (The rear stone keeps the rear iron in position.)



6. After having removed the stones also at the other side of the fireplace, the rear iron can be removed and replaced, if necessary.





7. When positioning the replacement stones, start with the rear stone. Hold back the rear iron by means of one hand, till the first rear stone is in position.



8. The centre stone is to be positioned as the last of the stones. NB! After having positioned all the stones, please check that the holes are upwards and that the countersunk holes not are inwards to the fireplace.

NB! Never unscrew the stove hob/top part If you do so, the guarantee becomes invalid.

VIKING 30 – THE SLENDER STOVE

Produkt: Viking 30	Josef Davidsson´s Eftr. AB Box 42 330 21 REFTELE Sweden	
Typ/Type/Type: Raumheizer/Radiator/ Radiateur	Brennstoff/Fuel/Combustible: Scheitholz/Log wood/ Bois de chauffage	Nennwärmeleistung/ Nominal heating capacity/ Puissance calorifique: 7 kW
Mindestabstände/ Least distances/ Distances minimales	Seitenwand/Side wall/ Panneau lateral: 150mm	Rückwand/Back wall/ Panneau arrière: 300mm
CO-Emission/ CO emissions/ Émissions de CO: 0,11%	Wirkungsgrad/ Efficiency/ Rendement énergétique: 78%	Abgastemperatur/ Flue gas temperature/ Température des gaz de Combustion: 277°C
Staub/Dust/ Poussière: 17mg/m³	Serienr./Jahr/Year/Année	Zeitbrandfeuerstätte/ Time fire heat/ Foyer d'incendie de temps
Ausschließlich empfohlene Brennstoffe verwenden/Exclusively recommended fuels use/Les combustibles exclusivement recommandés utilisent		Mehrfachbelegung des Schornsteins ist Zulässig/Multiple allocation of the chimney is allowed/L'occupation multiple de la cheminée est admissible
Prüfstellen-Kennziffer/ Testing centres-identity figure/ Numéro de lieux d'identification Dèssai: E-39-0032-10		Lesen und Befolgen Sie die Bedienungsanleitung/Reading and obeying the operating instructions/Lecture et le fait d'exécuter vous le mode d'employ
 JOSEF DAVIDSSONS EFTR. <small>FOUNDED IN 1882</small> <small>WOOD-BURNING COOKERS, STOVES & ACCESSORIES</small>		

Trouble Shooting

Problem	Reason	How to solve the problem
Poor draught.	The connection to the brick-lined chimney is not properly tightened.	Ask the chimney sweep to check that the connection between stove and chimney is quite tight.
	The flue tube is full of soot or the Viking Turbo is full of soot (the flue gas box which prolongs the way of the flue gas through the stove).	Clean flue tube and fireplace. Remove the soot from the Turbo device.
	The chimney is blocked, e.g. a bird nest or like. The chimney is too short or the cross-sectional area is too large.	Contact the chimney sweep or your dealer for further guidance.
	The smoke turning device (the rear iron) may be in wrong position.	Shake the rear iron with your hand to get it in its proper position.
	Negative pressure in the room.	Open a window or fix an external wall valve close to the stove.
	Moisture content is too high in the wood or the wood is too cold.	Only dry wood with a maximum moisture content of 20 % is to be used. Keep the wood indoors for 24 hours to adapt to the ambient temperature before lighting it.
Too strong draught.	If oven dried wood is being used, it requires less air supply than normal wood fuel.	Reduce the air supply by adjusting the swivel air valve and the air valve on top of the stove.
	The door seals are worn out.	Check the seal strips. If necessary, replace.
	The chimney is too long.	Contact the chimney sweep or your dealer for further guidance.
Soot deposit on the glass in the door	The moisture content of the wood is too high.	Only dry wood with a maximum moisture content of 20% is to be used.
	The Fresh air valve (secondary air) is too closed.	Open the valve to supply more air for the combustion.
Glass turns white	Poor combustion.	Follow the instructions for proper lighting in this manual.
	Incorrect firing (Use of waste wood, chipboard, pressure-impregnated, laminated plastic, Plywood or similar)	Always use clean and dry wood.
Smoke comes out in the room when opening the door	Pressure equalizing in the fireplace.	Open the air-valve about 1 minute before you open the door – try always to open the door slowly.
	Poor chimney draught.	Check that the height of the chimney. It may be too short relatively to the required minimum draught for the stove.
	The door was opened when there is still a fire burning in the fireplace.	Only open the door when the wood has turned to glowing embers.
White smoke	The combustion temperature is too low.	Increase the air supply by opening the swivel air valve and the air valve on top of the stove.
	The wood is too damp and contains water vapour.	Always use clean and dry wood.
Black or greyish black smoke	Insufficient combustion.	Increase the air supply by opening the swivel air valve and the air valve on top of the stove..

Difficulties in starting the fire in most cases are the result of using wood with too high humidity content, too poor draught or untight chimney connections.
There is a **dampener**, mechanical, which bypasses the long flue gases and speeds up the draught in the chimney/fireplace (retrofitable). Available as optional extra.

Guarantee Certificate

Guarantee conditions

J Davidssons Eftr. AB is responsible for delivering a product free of defects in material and workmanship and any damage related to storing at the factory.

The time of guarantee starts from the date of delivery to the customer.

J. Davidssons Eftr AB will accept no liabilities for costs or expenses that may occur for dismantling or mounting by replacement of the stove.

J Davidssons Eftr. AB will accept no liabilities for costs occurred subsequent to a standstill or other direct or indirect costs and damages.

The guarantee conditions are not applicable to glass parts or to the replaceable fireplace parts.

The time of guarantee for grates, internal cast iron side walls, etc is 1 year.

3 Years	5 Years	10 Years
Viking 60, 75	Oden 110	Smålandsspisen 28, Smålandsspisen 1896, Idun Nr. 1, Viking 30, Royal Viking, Barnspis Oden 6318.

Markus & Mikael Andersson, partners.

Markus Andersson *Mikael Andersson*

Warning!

When the stove is in use certain surfaces become very hot, more than 90°C. Physical contact with these surfaces can cause skin burns.

Requirements related to the flue.

For both rear flue connections and top flue connections the chimney must be able to withstand temperatures of at least 350°C.

NB!

Always contact your local authority planning office before installing a wood-burning stove.

The owner of the house is personally responsible for ensuring compliance with the mandatory safety requirements and must have the installation improved by a qualified inspector.

Your local chimney sweeper must also be informed about the installation as this will affect the routines for regular chimney-sweeping services.



FOUNDED IN 1882

JOSEF DAVIDSSONS EFTR.

WOOD-BURNING COOKERS, STOVES & ACCESSORIES

Contact us at:

Telephone: +46 371-200 01

Fax: +46 371-210 01

www.j-davidssons.se

info@j-davidssons.se



J Davidssons Eftr. AB	Phone	E-mail	FK-nr	Swift
Box 42	+46 (0)371 -200 01	Info@j-davidssons.se	SE556194 -085801	NDEASESS
330 21 Reftele	Fax	Homepage	Bank	IBAN SE 77
Sweden	+46 (0)371 -210 01	www.j-davidssons.se	Nordea	3000 0000 0421 7130 0651